



# MARINE POLLUTION SURVEILLANCE REPORT

Analysis by: The National Oceanic and Atmospheric Administration, Satellite and Information Service (NOAA/NESDIS)



REPORT DATE/TIME: 5/19/2018 2310 (UTC)

DATA SOURCE: SUOMINPPVIIRS M-Band

MODE: Multispectral

RESOLUTION: 750 meter

IMAGE DATE/TIME: 5/19/2018 1849 (UTC)



Possible Oil



Possible Thicker Oil



Destroyed Taylor Platform:  
[28°56'16" N/88°58'14" W]

147.20 km<sup>2</sup>

Total Area of Possible Oil

AREA/BLOCK: MISSISSIPPI CANYON 20

## REMARKS:

Possible oil was observed in satellite imagery. This anomaly is unconfirmed as oil. The anomaly appeared to emanate from the destroyed Taylor Energy platform and extends E in a circular pattern for approximately 15NM with embedded sections of no observed possible oil; the area of possible oil appeared sliver and was indicative of oil in sun-glint. Wind data from buoy 'KMIS' indicates that winds were out of the S at approximately 3.1 m/s and aligns well with the orientation of the anomaly. Confidence was determined to be high given that the Taylor platform is known as a repeat leak source.

## UNCERTAINTIES:

Given the low resolution of this satellite sensor the full extent of this anomaly was difficult to determine.

ANALYST: FISHER

For further information on oil spill response and assessment go to:  
<https://response.restoration.noaa.gov/oil-and-chemical-spills/oil-spills>

## UNCONFIRMED AS OIL

"Possible Oil" depicts area that satellite analyst believes might contain oil but this is unconfirmed

## CONFIDENCE: High

(Low, Medium, Medium-High, High)

29°15'N

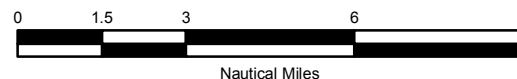
29°10'N

29°5'N

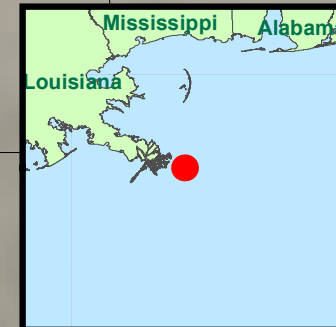
29°0'N

28°55'N

Analyst was unable to differentiate between thicker and thinner oil due to imagery limitations or unfavorable environmental conditions.



Nautical Miles



Possible Oil

Possible Oil

