

# MARINE POLLUTION SURVEILLANCE REPORT


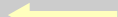

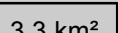


Analysis Provided by: The National Oceanic and  
Atmospheric Administration/National Environmental  
Satellite, Data and Information Service (NOAA/NESDIS)

REPORT DATE: JUNE 07, 2015  
REPORT TIME: 0800Z (0300 CDT)  
ANALYST: TURK

DATA SOURCE: LANDSAT-8 OLI  
MODE: Multispectral  
RESOLUTION: 30 meter  
IMAGE DATE/TIME: 6/6/2015 1637Z (1137 CDT)

## Legend

-  Possible Oil
-  False-Positive (not oil)
-  Center Point of Oil Slick:  
[ 28°42'44" N / 92°35'14" W ]
-  Area of Possible Oil

**CONFIDENCE: Medium**

## REMARKS:

A point source could not be identified for a series of anomalies that stretched from east to west for 9.2 miles at 1637Z. Portions of the anomalies had a silver or white shimmer, which might indicate thicker oil. The anomalies were moving southeastward based on their appearance roughly 2.5 hours later in a 1915Z MODIS Aqua image. Satellite analysis did not show the presence of chlorophyll.

Winds were light and variable at the time of the image and skies were clear.

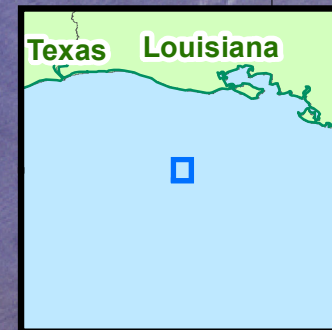
92°40'W

92°35'W

92°30'W

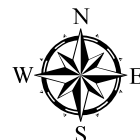


Imagery Courtesy of the  
U.S. Geological Survey



28°45'N

28°40'N



0 0.5 1 2 3 4 Miles

0 0.375 0.75 1.5 2.25 3 Nautical Miles

0 0.5 1 2 3 4 Kilometers