

# MARINE POLLUTION SURVEILLANCE REPORT


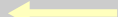




Analysis Provided by: The National Oceanic and  
Atmospheric Administration/National Environmental  
Satellite, Data and Information Service (NOAA/NESDIS)

REPORT DATE: OCTOBER 15, 2015  
REPORT TIME: 0040Z (10/14/2015 1940 CDT)  
ANALYST: TURK

DATA SOURCE: LANDSAT-8 OLI  
MODE: Multispectral  
RESOLUTION: 30 meter  
IMAGE DATE/TIME: 10/14/2015 1626Z (1126 CDT)

## Legend

-  Possible Oil
-  False-Positive (not oil)
-  Destroyed Taylor Platform :  
[ 28°56'9" N / 88°58'12" W ]
-  Area of Possible Oil

**CONFIDENCE: High**

## REMARKS:

A slick up to a 0.5 mile wide extended 10.4 miles to the southwest of the destroyed Taylor platform.

Sky conditions were clear and winds were from the north at 10-15 knots.



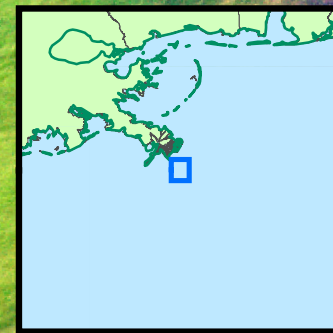
Imagery Courtesy of the  
U.S. Geological Survey

28°55'N

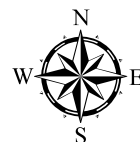
28°50'N

89°5'W

89°0'W



Possible Oil



0 0.5 1 2 3 4 Miles

0 0.375 0.75 1.5 2.25 3 Nautical Miles

0 0.5 1 2 3 4 Kilometers