

# MARINE POLLUTION SURVEILLANCE REPORT


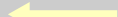




Analysis Provided by: The National Oceanic and  
Atmospheric Administration/National Environmental  
Satellite, Data and Information Service (NOAA/NESDIS)

REPORT DATE: OCTOBER 31, 2015  
REPORT TIME: 0110Z (10/30/2015 2010 CDT)  
ANALYST: VELASCO

DATA SOURCE: LANDSAT-8 OLI  
MODE: Multispectral  
RESOLUTION: 30 meter  
IMAGE DATE/TIME: 10/30/2015 1626Z (1126 CDT)

## Legend

-  Possible Oil
-  False-Positive (not oil)
-  Suspected Point Source:  
[ 28°11'26"N / 88°29'44" W ]
-  0.8 km<sup>2</sup> Area of Possible Oil

## CONFIDENCE: High

Anomaly suspected to be an oil slick seems to originate from an oil facility. There is high confidence that it is oil due to its black appearance outside of sun glint, defined edges, sharp turns, and orientation coinciding with easterly winds in the area. The slick is not very wide but does measure 4.5 miles in length. It is located 65-70 miles SE of the Mississippi Delta.

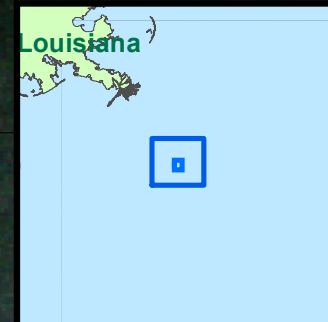
88°34'W

88°32'W

88°30'W



Imagery Courtesy of the  
U.S. Geological Survey

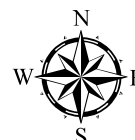


28°14'N

28°12'N

28°10'N

28°8'N



0 0.2750.55 1.1 1.65 2.2 Miles

00.176.35 0.7 1.05 1.4 Nautical Miles

00.326.65 1.3 1.95 2.6 Kilometers